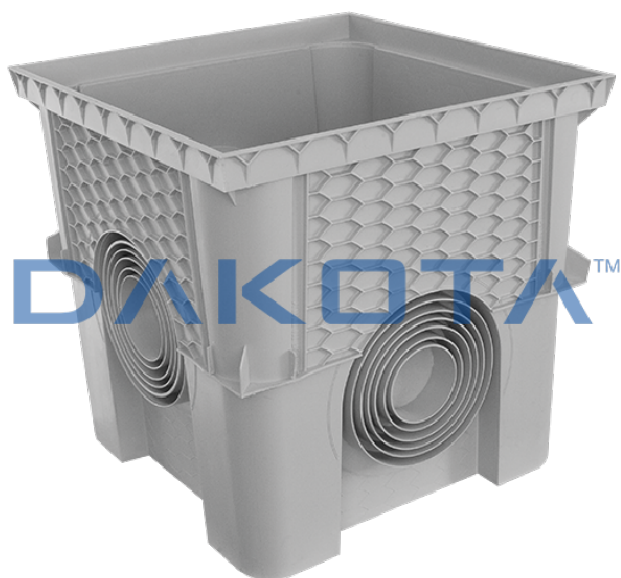


SMART CATCH-PIT



Code	Commercial Description	Dimensions	Conf.	Pallet	Selling Unit
POZ01-1372I	Smart catch-pit	200 x 200 mm	0	288	PZ
POZ01-1372IS	Smart catch-pit - Export	200 x 200 mm	0	288	PZ
POZ01-1373I	Smart catch-pit	300 x 300 mm	0	112	PZ
POZ01-1373IS	Smart catch-pit - Export	300 x 300 mm	0	112	PZ
POZ01-1374I	Smart catch-pit	400 x 400 mm	0	45	PZ
POZ01-1374IS	Smart catch-pit - Export	400 x 400 mm	0	45	PZ
POZ01-1371I	Smart catch-pit	550 x 550 mm	0	24	PZ

Description

The "Smart" drainage inspection chamber, also known as a catch basin or catch pit, is available in various sizes, from 200 x 200 to 550 x 550 mm, grey colour. Main characteristics: Light weight for easy transport, positioning and installation, even by a single person; High resistance thanks to the side rounded reinforcements that avoid breakages at the corners. Pipes of every sizes can easily fit thanks to the special pre-cut concentric shape of the side holes. Space reduced to the half, thanks to the hi-stacking features Compatible with relative PP inspection chamber cover and grating.

Material

Made of PP (polypropylene).

Use

Used as an alternative to traditional concrete catch basins for its many benefits. Also suitable for housing electrical devices/cables at the ground.

Accessories

Code	Commercial Description	Dimensions	Conf.	Pallet	Selling Unit
POZ06-1379	Siphonated Plate	300 x 300 mm	0	2040	PZ
POZ06-1380	Siphonated Plate	400 x 400 mm	0	900	PZ
POZ06-1389	Siphonated Plate	550 x 550 mm	0	480	PZ
POZ05-1382	Catch Pit Extension 200x x200 mm - h. 100mm	200 x 200 mm	0	240	PZ
POZ05-1376	Catch Pit Extension 300 x 300mm, h.100mm	300 x 300 mm	0	120	PZ
POZ05-1377	Catch Pit Extension 400 x 400mm, h.100mm	400 x 400 mm	0	60	PZ
POZ05-1377B	Catch Pit Extension 550 x 550mm, h.130mm	550 x 550 mm	0	44	PZ
POZ02-1368EN	Standard Cover for Smart Catch-Pit 40 x 40	400 x 400 mm	0	360	PZ
POZ02-1348M	Cover with Handle	200 x 200 mm	0	1080	PZ

